

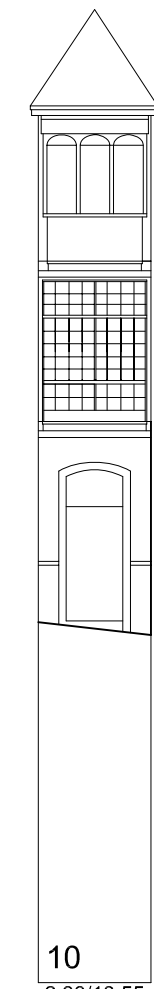
13 30.90/12.45

Praza da Princesa



13 14.18/13.10 12 6.08/6.25 11 8.83/19.70 10 16.60/12.85

Praza da Porta do Sol



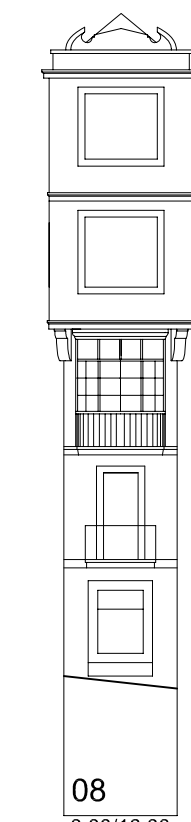
10 2.98/13.55

Rúa Carral



10 16.04/15.15 09 11.20/18.90 08 5.26/15.40

Rúa Fermín Penzol



08 3.00/16.00



08 10.16/15.80 07 6.40/13.80 06 6.56/14.70 05 9.67/13.85 05 9.85/9.15 04 20.52/18.75 02 5.08/6.45 03 6.89/2.80



02 13.38/10.25 01 14.72/11.75

Rúa de Joaquín Yañez



01 7.45/11.35 18 6.63/11.30 17 6.10/17.40 15 13.85/18.25 14 8.40/12.00

Praza da Constitución



14 19.85/12.50

Praza da Princesa



14 8.40/13.10 15 13.30/19.50 17 7.60/18.40 18 5.00/11.50




02 6.02/8.90 02 2.99/5.25 04 15.44/17.00

Praza da Princesa

Praza da Princesa



	PLAN ESPECIAL DE PROTECCIÓN E REFORMA INTERIOR CASCO VELLO DE VIGO	FASE: APROB. DEFINITIVA
	PLANOS DE INFORMACIÓN TÍTULO: ALZADOS. ESTADO ACTUAL. COUZADA 28650	PLANO Nº 3.59 ESCALA 1/200
CONSULTORA GALEGA, S.L. RUA SAN MARTÍN, 3-B 36002 PONTEVEDRA T.F. 986.85.89.67 FAX. 986.85.89.58 E-mail: consultora@consultoragalega.com		DATA: DECEMBRO 2006